

7.- 人類の進化

1 Aegyptopithecus Zeuxis



2 Sahelanthropus Tchadensis



3 Kenyanthropus Playtops



4 Australopithecus Afarensis (Lucy)



5 Australopithecus Afarensis (3.000.000 年前 1992 年発見, Ethiopia)



6 Australopithecus Aethiopicus



7 Australopithecus Africanus (Miss Pless)



8 Australopithecus Boisei (1.800.000 年前 1959 年発見, Tanzania)



9

Australopithecus Boisei (1.700.000 年前 1969 年発見, Kenya)



10

Australopithecus Robustus (1.700.000 年前 1938 年発見, South Africa)



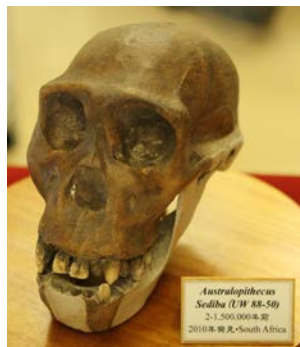
11

Australopithecus Robustus (DNH 7)



12

Australopithecus Sediba



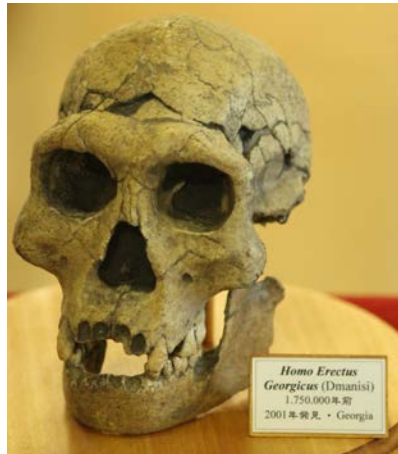
13 Homo Habilis (KNM-ER 1813)



14 Homo Habilis (OH-24)



15 Homo Erectus Georgicus



16 Homo Erectus Erectus Java



17

Homo Erectus Pekinensis



18

Homo Rudolfensis



19

Proconsul Africanus



20

Mesopithecus Pentelici



21 Homo Ergaster (KNM-ER 3733)



22 Homo Antecessor



23 Homo Heidelbergensis (600,000 年前 1976 年発見, Ethiopia)



24 Homo Heidelbergensis (300,000 年前 1992 年発見, Atapuerca)



25 Homo Steinheimensis (250.000-230.000 年前 1933 年發見, Germany)



26 Homo Rhodesiensis



27 Homo Neanderthalensis (230.000-28.000 年前 1909 年發見, France)



28 Homo Neanderthalensis (230.000-28.000 年前 1864 年發見, Germany)



29

Homo Sapiens Chancelade (19.000-14.000 年前 1888 年發見, France)



30

Homo Sapiens Cro-Magnon



31

Homo Floresiensis



32

Ardipithecus Ramidus



33

Gigantopithecus(顎 III)



34

Homo Gautengensis



35

Australopithecus Afarensis AL 444-2



36

Australopithecus Africanus (Taung Child)

